



Scheduling Custom Schemes

How to Schedule Full, Differential, Incremental backups & Overwriting / Appending Tapes

Introduction

Advanced users can choose to schedule custom backup schemes that involve Full, Differential and Incremental backups, and also Overwrite or Append to tapes.

This is done through the Custom backup scheme in BackupAssist. This white paper explains how to do this.

How To Setup BackupAssist

From the Schedule tab in BackupAssist, select the Custom backup scheme. Then to customize your strategy, click the "Modify your custom scheme" link.

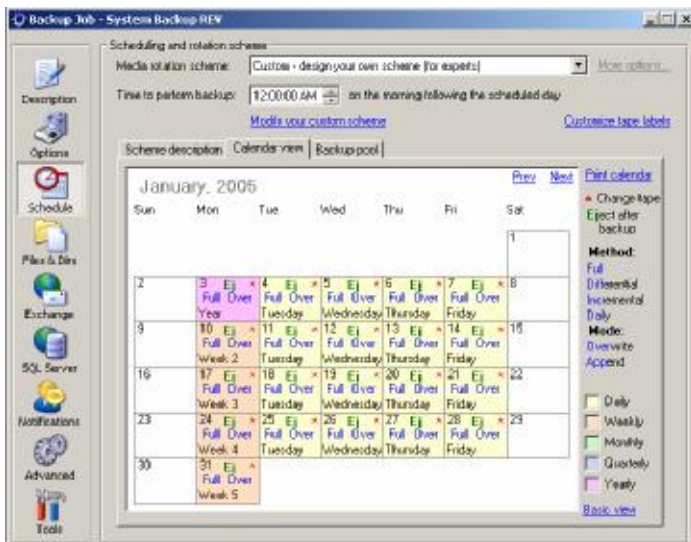
This will start the Custom Scheme Designer. From here you can design your custom scheme. There are two separate aspects of a backup scheme:

1. The backup schedule — what type of backup is performed on what day
2. The media pool — what tapes your media pool contains so BackupAssist can send out reminder emails.

The easiest way to explain the setup process is by example. A number of different examples are described in this white paper.

Warning: care should be taken when designing and implementing a custom scheme. It is relatively easy to make mistakes when setting up a custom scheme, leaving your data vulnerable.

A convenient way of viewing your backup scheme is to use the Calendar view. Click on **Advanced view** to see all the details.



The following pages provide a series of custom backup scheme scenarios and the appropriate settings required to achieve them using BackupAssist.

Once again it should be noted that great care should be taken when implementing a customized backup procedure, particularly when more complex schemes are implemented as they are quite often prone to human error.

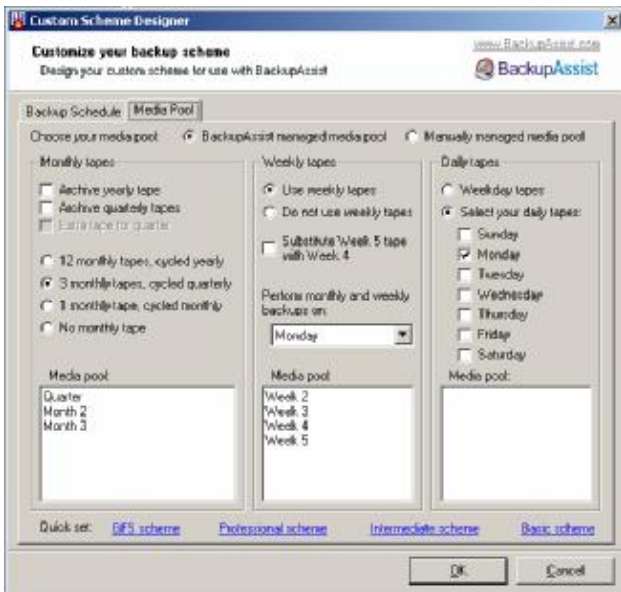
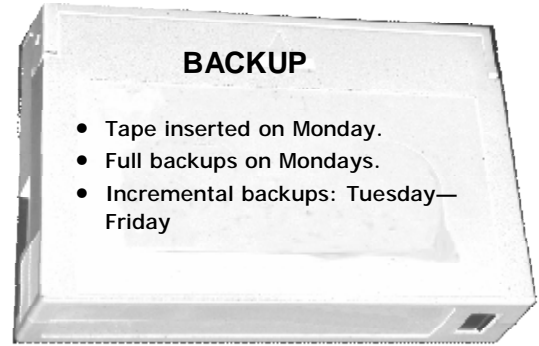
Always refer back to the calendar view of BackupAssist, using the **Schedule** button located on the left of BackupAssist to confirm that your custom scheme has been correctly configured as this view provides the most rudimentary and clear depiction of your implemented backup process.



Example #1

- Full backups on Mondays.
- Incremental backups on Tuesday — Friday, depending to the Full backup tape.
- The tape is changed every Monday.
- The media pool contains tapes for the last 3 months, plus each week of the month (Week 2—Week 5).

The Backup Schedule should be configured in BackupAssist as follows:

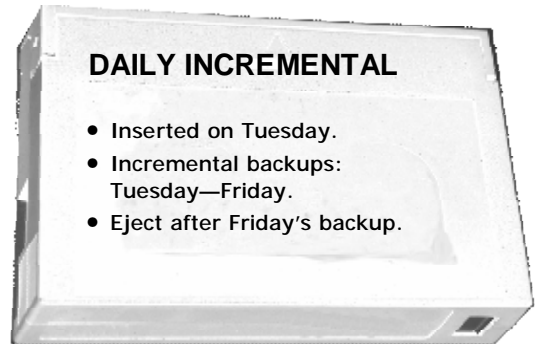
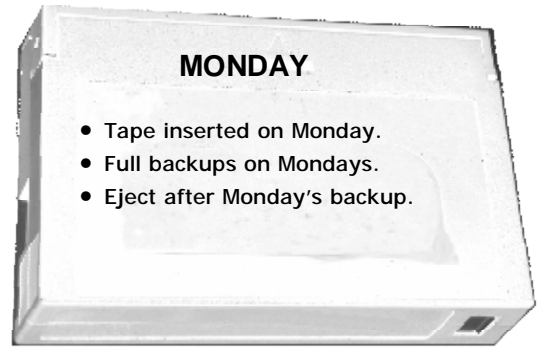
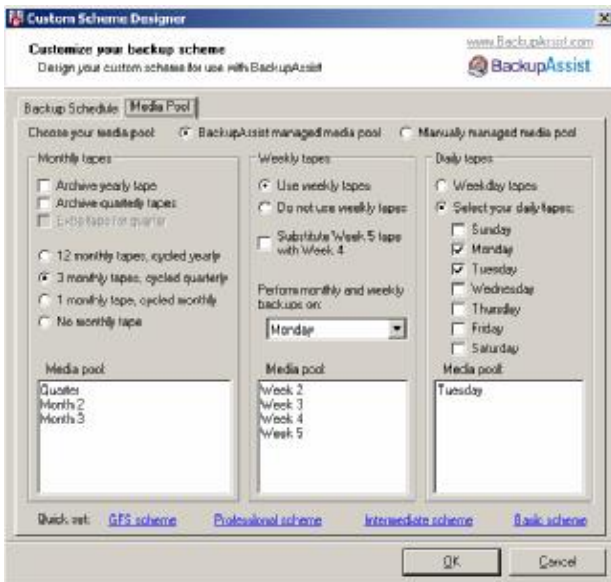
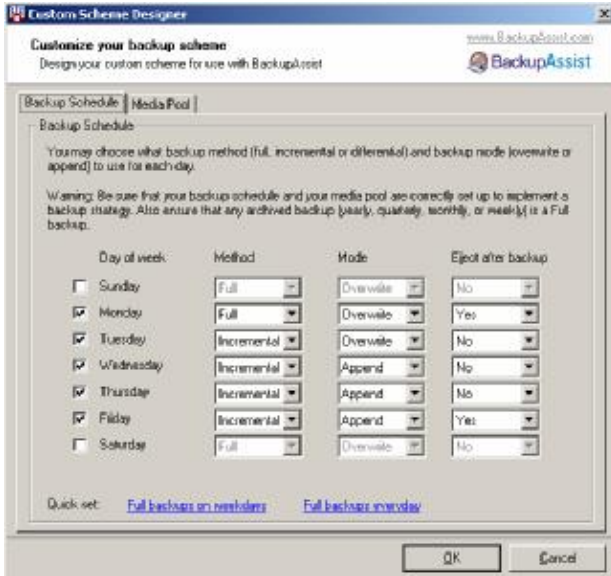




Example #2

- Full backups on Mondays.
- Incremental backups on Tuesday — Friday, with a new tape starting on Tuesday.
- The tape is changed every Monday and Tuesday.
- The media pool contains tapes for the last 3 months, plus each week of the month (Week 2—Week 5), plus the Incremental tape for Tuesdays.

The Backup Schedule should be configured in BackupAssist as follows:

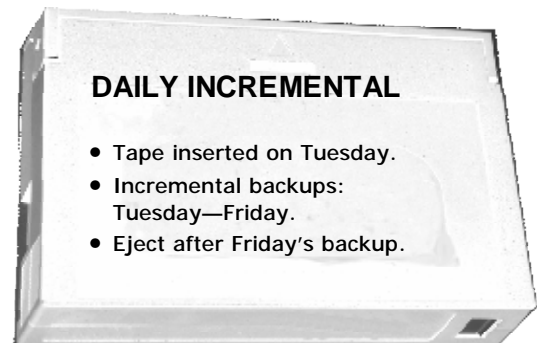
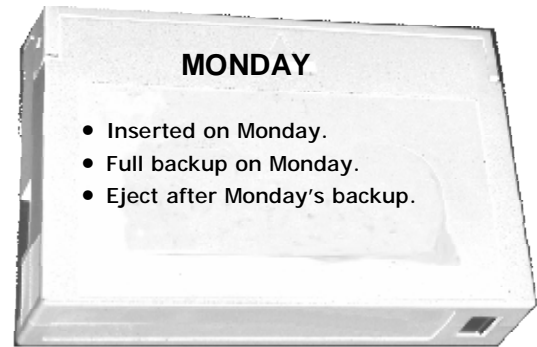
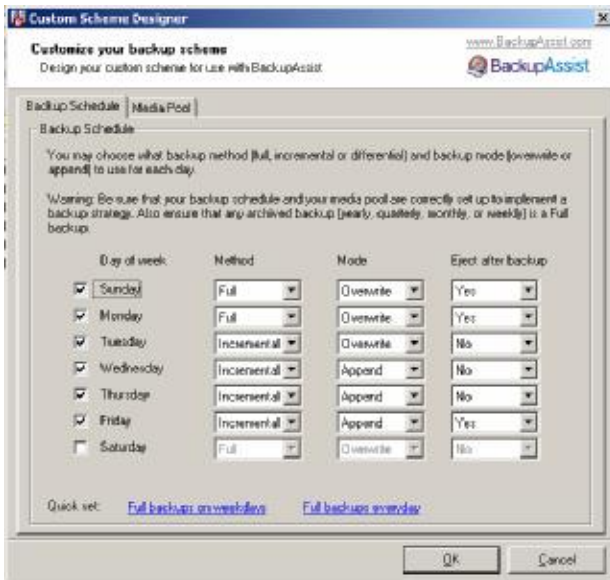




Example #3

- Full backups on Sundays and Mondays
- Sunday's backups are archived monthly.
- Incremental backups on Tuesday — Friday, depending to the Full backup tape
- The tape is changed every Sunday, Monday, Tuesday
- The media pool contains tapes each month of the year, plus each week of the month (Week 2—Week 5), plus the Full backup on Mondays and the Incremental on Tuesdays

The Backup Schedule should be configured in BackupAssist as follows:

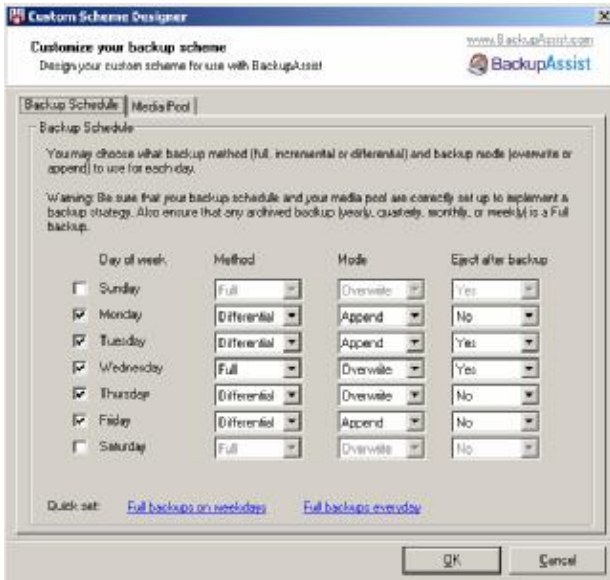
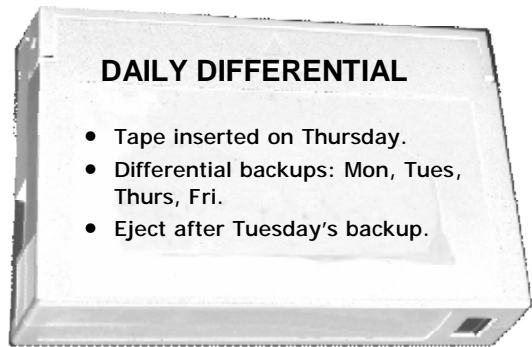
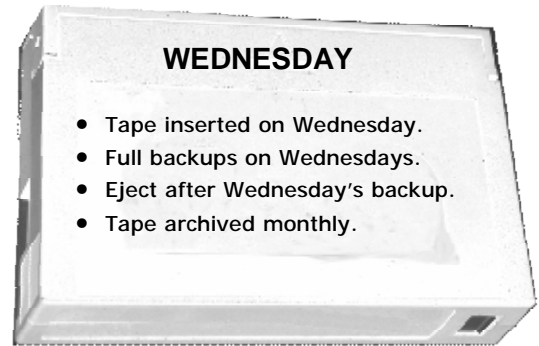




Example #4

- Full backups on Wednesdays
- Differential backups on Mon, Tue, Thurs, Fri, appending to a separate differential tape that's recycled every Thursday
- The tape is changed every Wednesday and Thursday
- The media pool contains the full and differential tapes for the last 4 weeks, meaning a media pool of 8 tapes

The Backup Schedule should be configured in BackupAssist as follows:



Note:

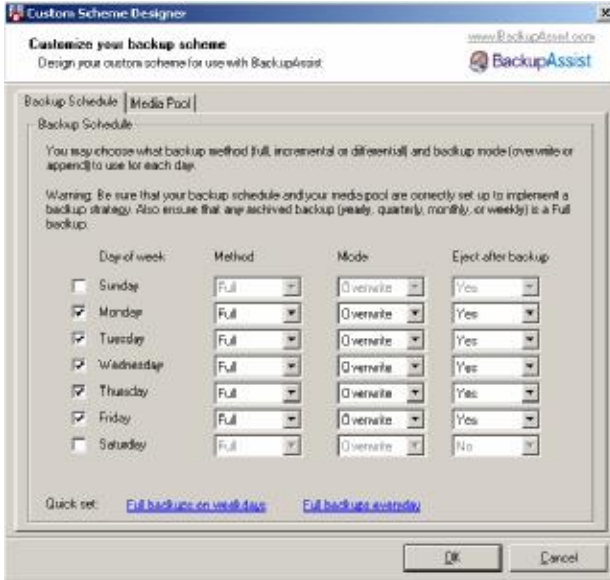
The media pool is maintained by the user, and not BackupAssist, so the "Manually managed media pool" option is selected, and BackupAssist will send out reminders to change the tape on Wednesdays and Thursdays.



Example #5

- Full backups on Weekdays
- The media pool contains 20 tapes—the last 4 weeks of backups.

The Backup Schedule should be configured in BackupAssist as follows:



Note: The 20 tape media pool is maintained by the user, and not BackupAssist, so the "Manually managed media pool" option is selected, and BackupAssist will send out reminders to change the tape on the weekdays.