



BackupAssist™

BackupAssist v7

# BackupAssist v6 to v7 comparison

# Contents

1.	What's new in BackupAssist version 7 .....	2
2.	Comparison Matrix .....	3
3.	<b>New</b> Operating System & Environment support .....	4
4.	<b>New</b> Centralized Management.....	4
5.	<b>New</b> Real-Time Monitoring .....	5
	Reporting .....	5
	Computer details .....	5
6.	<b>New</b> Simple and Enhanced interface.....	6
	The new Backup Console .....	6
	The new Restore Console.....	6
	Support.....	6

# 1. What's new in BackupAssist version 7

There are three main reasons why you should upgrade to BackupAssist v7:

- To keep up with the latest best practice back up standards on both new and older Windows products.
- To increase the ease and reliability of your back up and restore tasks.
- To ensure the cost effectiveness of your back up strategy.

BackupAssist v7 new features include:

## Centralized Management

- A **Central Admin console** to manage all BackupAssist instances remotely from a central location
- Web browser support for backup management
- Open the full Backup Console remotely
- The ability to remotely stop, start, enable and disable backup jobs

## Real-time monitoring

- A **Central Admin console** to monitor all BackupAssist instances in real-time from a single interface
- View backup reports within the Central Admin console
- The ability to retrieve details on specific BackupAssist computers

## New enhanced interface

- A new GUI with a clear and intuitive layout
- A new step-by-step backup creation wizard
- Improved back up scenarios to simplify backup job creation
- A new step-by-step restore creation wizard

## Operating System & environment Support

- Supports Windows Server 2012
- Enhanced support for the Microsoft operating system
- Android and iOS devices now support central monitoring

## Improved VSS diagnostics

- Provides additional system information for troubleshooting VSS problems

## 2. Comparison Matrix

Features	BackupAssist v6	BackupAssist v7
<b>Centralized management</b>		
Monitor multiple instances of BackupAssist	x	✓
Remote administration console	x	✓
Run and cancel backup jobs remotely	x	✓
Enable and disable backup jobs remotely	x	✓
Import/export BackupAssist settings	✓	✓
View remote computer System Info	x	✓
<b>Backup monitoring</b>		
Monitor backup jobs remotely in real-time	x	✓
Backup reports	✓	✓
Hyper-V configuration reporting	✓	✓
View the duration of the last backup on each machine	x	✓
View the status of all backup jobs on a remote machine	x	✓
<b>GUI interface</b>		
Online support	✓	✓
Simplified step-by-step backup creation process	x	✓
Simple predefined backup scenarios	x	✓
More intuitive restore process	x	✓
<b>Operating system and environment support</b>		
Supports Windows Server 2012	x	✓
AES 256-bit encryption	✓	✓
Android & iOS Centralized Monitoring Console support	✓	✓
<b>VSS support</b>		
VSS application restore	✓	✓
Detailed system information available to assist in troubleshooting VSS and system related issues	x	✓

### 3. New Operating System & Environment support

BackupAssist Version 7 supports Microsoft Server 2012.

When using the BackupAssist centralized monitoring console (CMC) via [BackupAssist onTheGo](#) (available from the Android and iTunes App Stores) you will have the ability to monitor backups from any compatible tablet or smartphone.

### 4. New Centralized Management

Version 7 introduces the BackupAssist **Central Administration console**. In previous versions of BackupAssist, each installation of BackupAssist had to be managed locally on the computer where BackupAssist was installed. The new Central Administration console allows you to centrally manage all of your BackupAssist v7 computers using your preferred browser.

The Central Administration console displays a list of all registered installations of BackupAssist. This list includes system information such as the computer’s name and the port used for the connection.

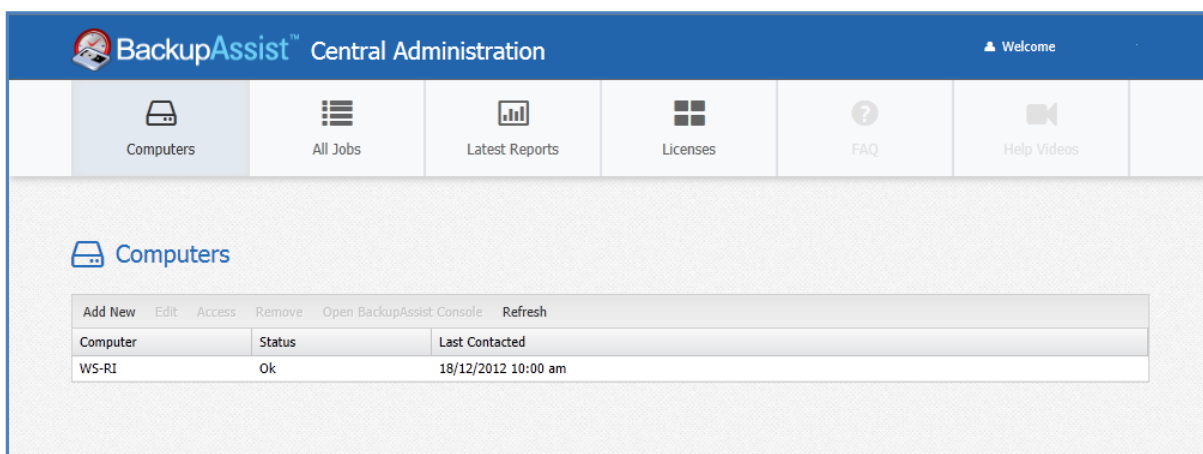


Figure 1: BackupAssist Central Administration console – registered installations

Some of the new features include the ability to remotely:

- Start and cancel backup jobs
- Enable and disable backup jobs
- Rename backup jobs
- View remote computer System Info
- Open a remote computer’s BackupAssist console for full management control

## 5. New Real-Time Monitoring

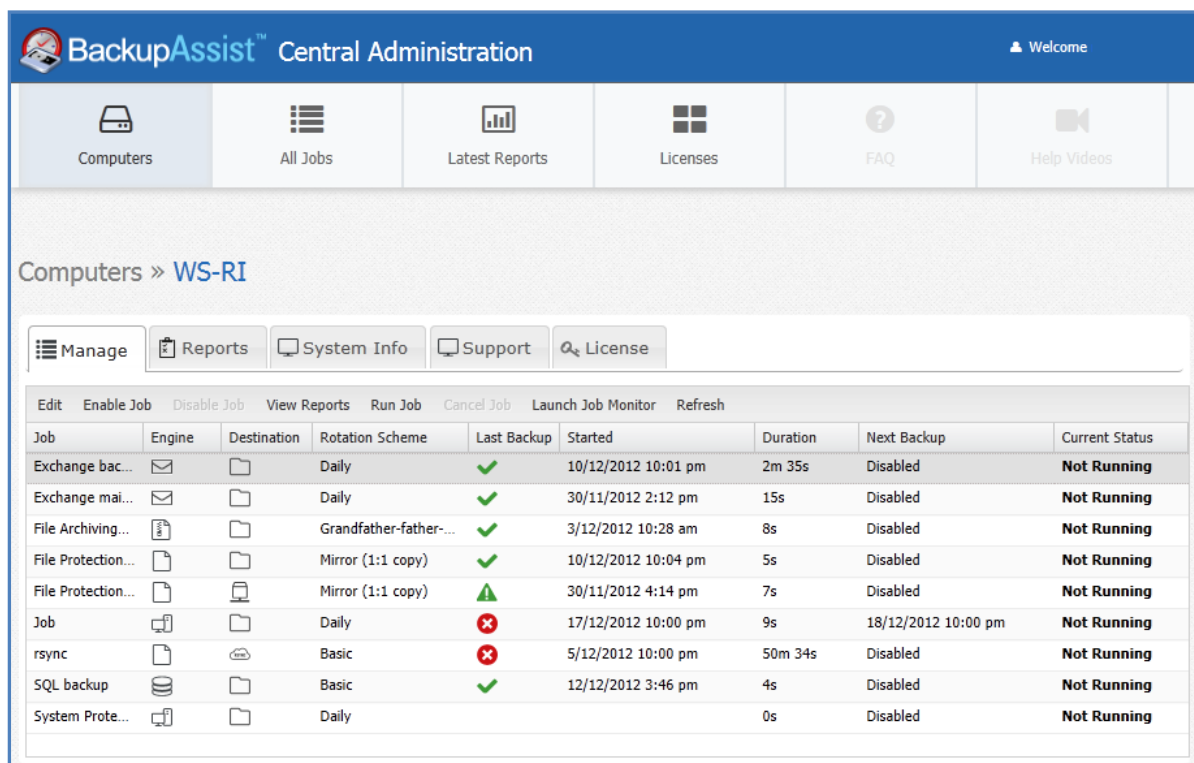
The new **Central Administration console** allows you to monitor all of your BackupAssist computers from one location in real-time.

### Reporting

In previous versions of BackupAssist, to view the backup reports on each server, you had to view the reports on each computer individually. The Central Administration console allows you to view the reports for any computer added to the console from one location.

### Computer details

Using the Central Administration console, you can select a computer running BackupAssist to examine that computer's details. This display will show all of the backup jobs on that machine and their current status.



Job	Engine	Destination	Rotation Scheme	Last Backup	Started	Duration	Next Backup	Current Status
Exchange bac...	✉	📁	Daily	✓	10/12/2012 10:01 pm	2m 35s	Disabled	Not Running
Exchange mai...	✉	📁	Daily	✓	30/11/2012 2:12 pm	15s	Disabled	Not Running
File Archiving...	📄	📁	Grandfather-father-...	✓	3/12/2012 10:28 am	8s	Disabled	Not Running
File Protection...	📄	📁	Mirror (1:1 copy)	✓	10/12/2012 10:04 pm	5s	Disabled	Not Running
File Protection...	📄	📁	Mirror (1:1 copy)	⚠	30/11/2012 4:14 pm	7s	Disabled	Not Running
Job	📄	📁	Daily	✗	17/12/2012 10:00 pm	9s	18/12/2012 10:00 pm	Not Running
rsync	📄	📁	Basic	✗	5/12/2012 10:00 pm	50m 34s	Disabled	Not Running
SQL backup	📄	📁	Basic	✓	12/12/2012 3:46 pm	4s	Disabled	Not Running
System Prote...	📄	📁	Daily			0s	Disabled	Not Running

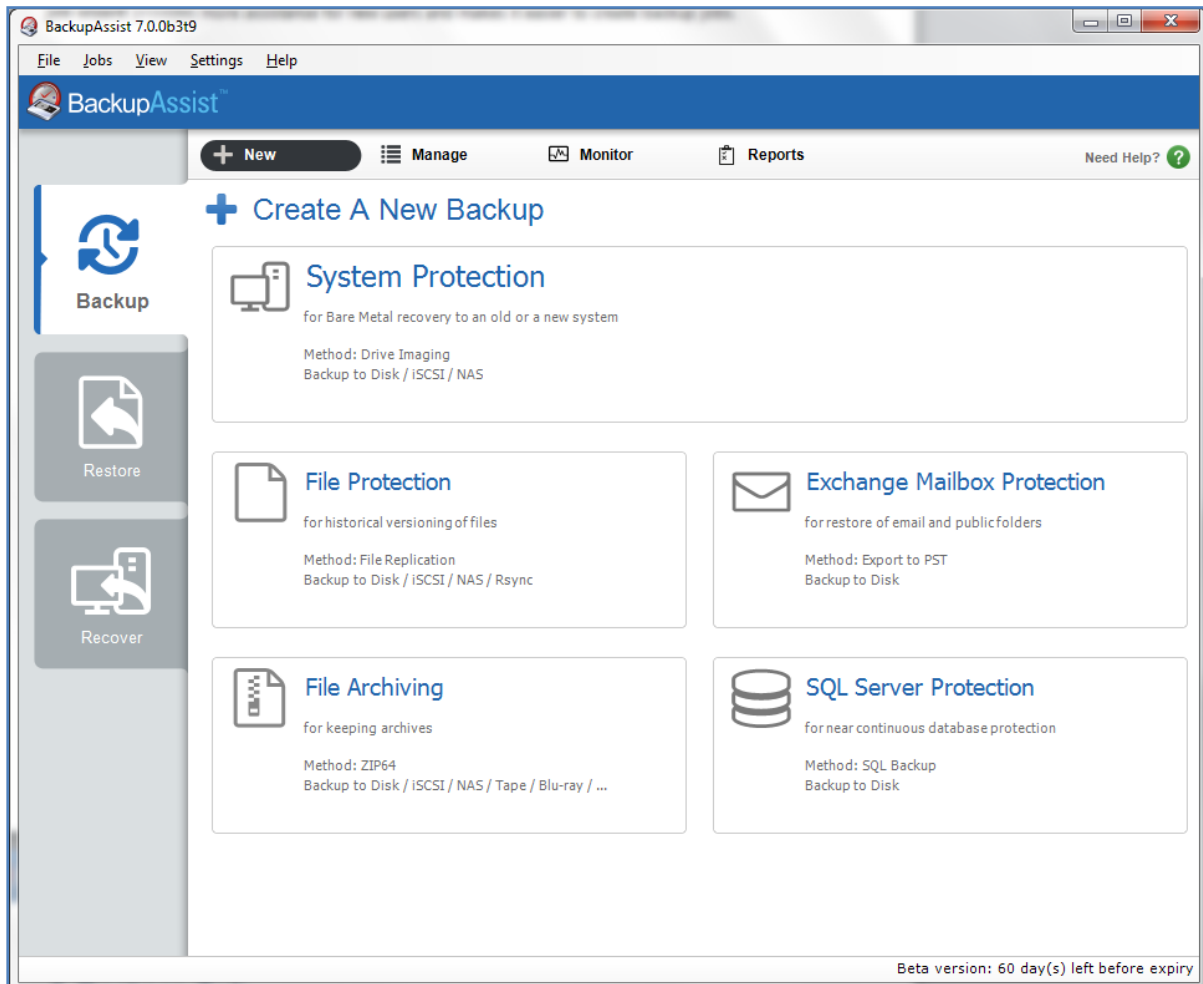
**Figure 2: BackupAssist Central Administration – remote computer details**

Features include the ability to remotely:

- View reports on all backup jobs in one interface
- Remotely monitor backup jobs
- View the last job status for each backup job
- View a job's back up duration
- See when the next back up is scheduled
- View destination job settings
- View a current job's status

## 6. New Simple and Enhanced interface

BackupAssist Version 7 is now even easier to use. Our improved GUI interface provides clear and easy access to all of the BackupAssist features.



**Figure 3: BackupAssist GUI – Backup tab**

### The new Backup Console

The new BackupAssist back up wizard has easy to follow step-by-step instructions to simplify the creation of backup jobs. The new process allows you to choose a backup option based on the type of restoration functionality you require.

### The new Restore Console

The new BackupAssist Restore wizard allows you to easily locate and restore backups. The step-by-step process makes it easier to review the available backups and restore them to your chosen location. All you do is select which backup job you want to restore from, and BackupAssist will select the most appropriate settings based on industry best practices.

### Support

The new GUI also has integrated support functionality.