



# BackupAssist™ v4 and Backup Exec™ v12 Feature Comparison

BackupAssist and Backup Exec are often regarded as competing products in the area of Small and Medium Business Backups.

Although both products provide excellent data protection for SMB's, the design philosophies behind the products are vastly different, resulting in substantial differences in the user experience, maintainability and costs.

This document discusses the strengths and limitations of each product to enable I.T. decision makers and technicians to understand how the two products compare.

# Contents and disclaimer

## Contents

Usability .....	3
Extensive built-in support for various hardware types .....	5
Best Practice Rotation Schemes .....	7
Media Management and Licensing .....	9
Functionality in Backup Exec but not BackupAssist.....	11
Comparison Matrix.....	12

## Disclaimer

This Product Comparison document is intended only for informational purposes and shall not be used for any commercial purpose, including and not limited to use in advertising, sale, marketing, or otherwise.

The information and content in this document is provided for informational purposes only and is provided "as is" with no warranty of any kind, either express or implied, including but not limited to the implied warranties of merchantability, fitness for a particular purpose, and non-infringement.

Cortex I.T. Labs Pty Ltd (Cortex I.T.) is not liable for any damages, including any consequential damages, of any kind that may result from the use of this document.

The information is obtained from publicly available sources. Though reasonable effort has been made to ensure the accuracy of the data provided, Cortex I.T. makes no claim, promise or guarantee about the completeness, accuracy or adequacy of information and is not responsible for misprints, out-of-date information, or errors.

Cortex I.T. makes no warranty, express or implied, or assumes any legal liability or responsibility for the accuracy or completeness of any information contained in this document.

## Plain English Version

Please do not rely on this document to make your buying decision. We recommend that you thoroughly evaluate both products to determine which product will better meet your specific requirements.

We have researched and tested both products thoroughly to write this document; however, errors are possible. If you believe there are any factual errors in this document, please contact us and we will review your concerns as soon as practical.

© Cortex I.T. Labs 2001-2008. All rights reserved.

BackupAssist is a registered trademark of Cortex I.T. Labs. Backup Exec is a trademark or registered trademark of Symantec Corporation.

Products used for this comparison document were BackupAssist v4.0.15 and Backup Exec v12 Rev 1364

Prices quoted were correct at time of writing (5th March 2008), obtained from [www.BackupAssist.com](http://www.BackupAssist.com) and [www.symantec.com](http://www.symantec.com).

Prices quoted are in US Dollars.

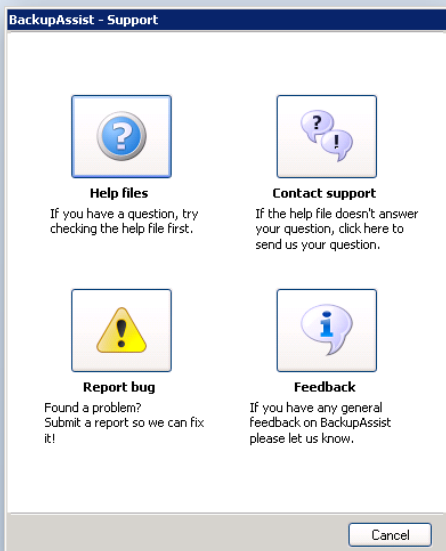
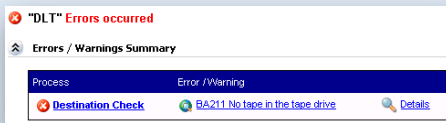
# Usability

Usability is perhaps the biggest difference between the products.

BackupAssist v4 has been designed to allow users of all experience levels to configure and maintain best-practice backup strategies with ease.

Intuitive wizards allow you to configure a backup job in a matter of minutes, and our searchable help file and interactive knowledge base allow you to find the information you want without having to read a 1626 page administrators guide.

Navigation through the BackupAssist administration console is straightforward and everything can be accessed from the main screen – nothing is hidden away in sub-menu after sub-menu. You can even contact the BackupAssist Support team or submit feedback directly to the developers!

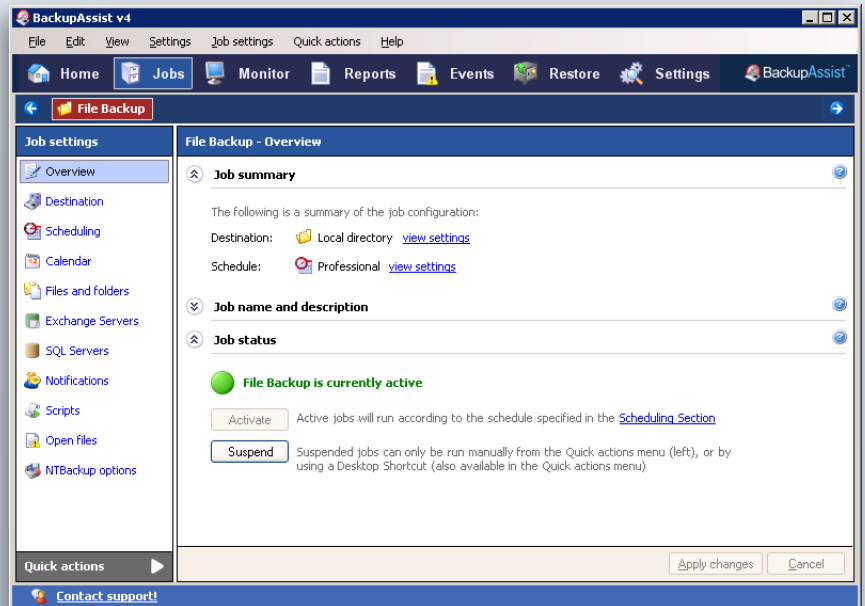


Jobs are listed in alphabetical order and show you at a glance the time the job will run, the date last run, result of the last backup, next run date, media rotation scheme and job status. This simple interface keeps you informed about progress.

From the same screen you can also run, clone, delete or suspend any job, all from one location and with a click of the mouse.

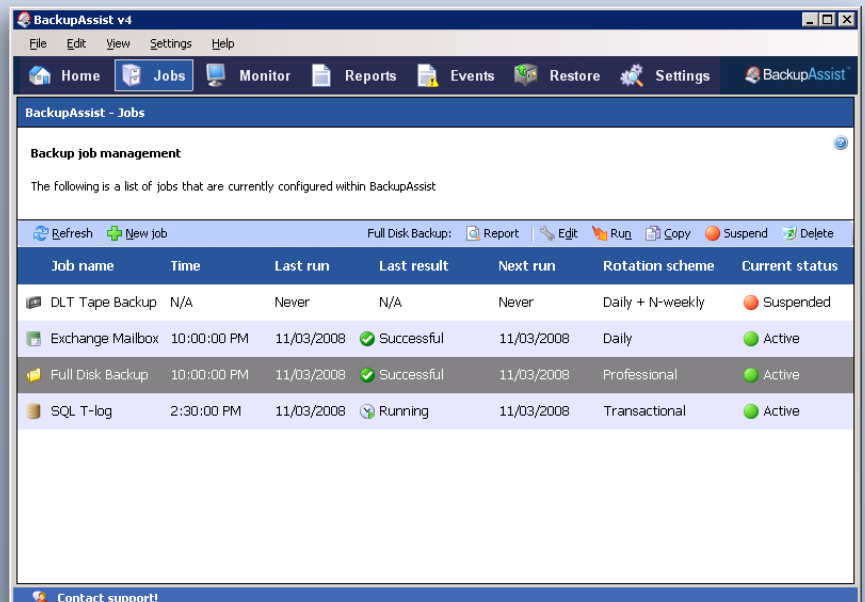
## Major Differences:

- BackupAssist is designed for ease of use: intuitive and simple enough for users of all levels of experience
- New users of BackupAssist can be up and running with their first job in just 7 minutes



BackupAssist provides built-in troubleshooting tools in both the administration console and backup reports, enabling you to resolve your problems faster.

In most cases, the links to our self-help knowledge base mean you can resolve issues yourself instead of contacting support, saving time and money. If you do need to refer to the help files you can use the search facility to quickly find the information you need.

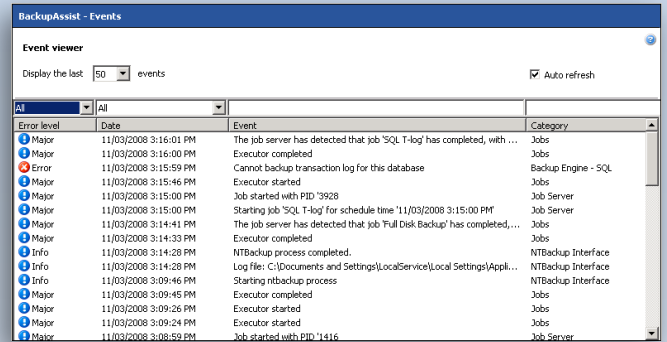
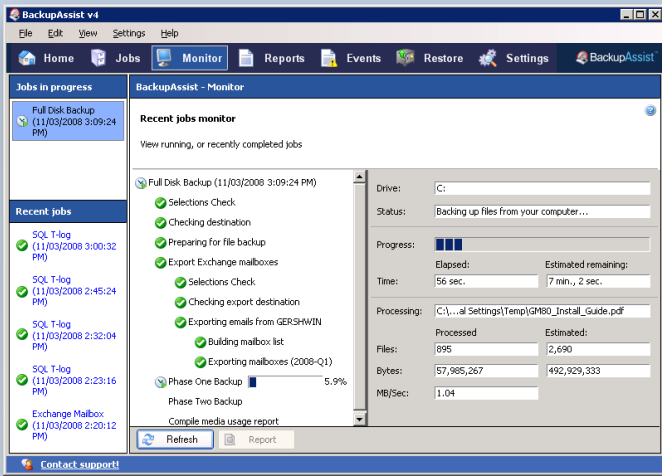


You can monitor the progress of any job via the Job Monitor screen, even if you are logged in via a remote connection.

Detailed event logging information is also available from the BackupAssist Events console, so you can see what is happening in greater detail.

### Features in Common:

- Monitor the live progress of a backup job
- View Events and Alerts



## Backup Wizard

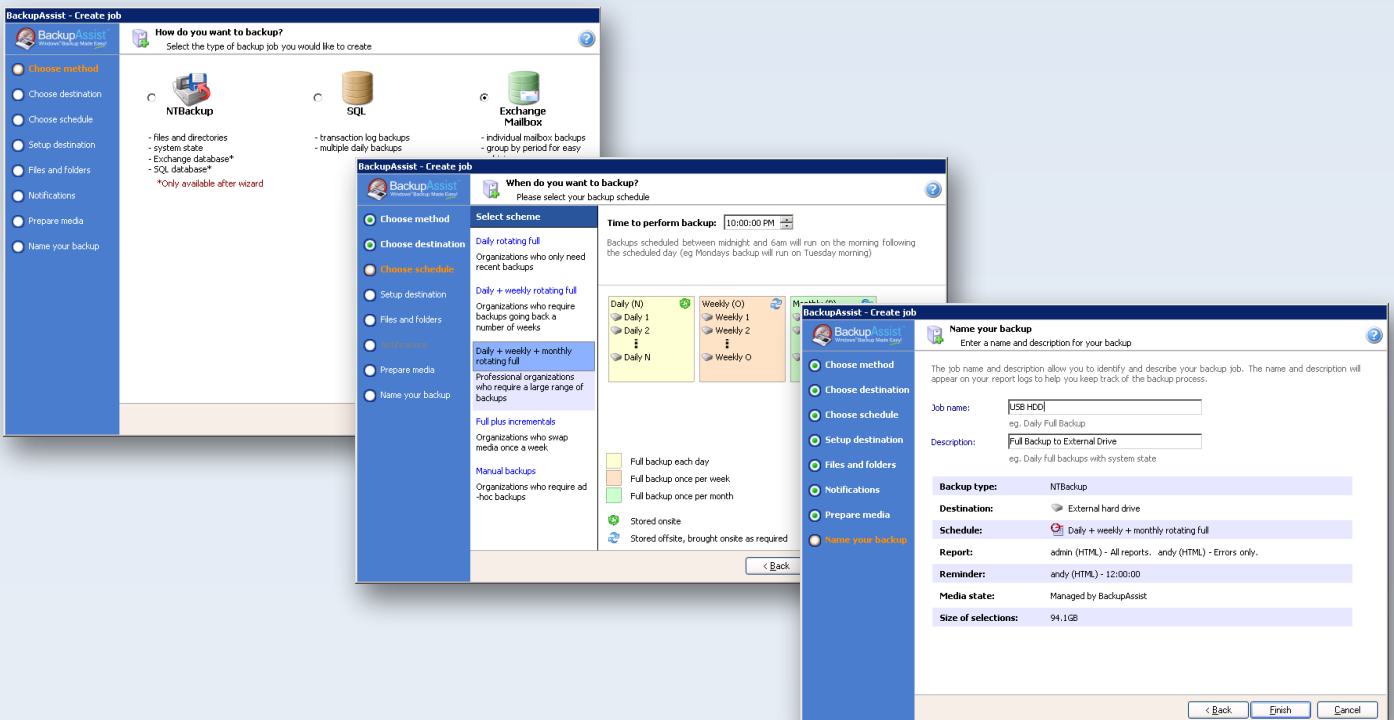
The new job wizard in BackupAssist takes you through the steps to create a working backup of your system and critical data.

Unlike Backup Exec, prerequisite tasks like installing drivers and remote agents, pre-configuring backup devices and setting up complex media pools using policies are not required. Instead, everything is done from one wizard.

Additionally, the backup of local and remote Exchange and SQL servers is done from the BackupAssist Administration Console and does not require additional agents to be installed on the target servers.

### Major Differences:

- BackupAssist allows you to completely configure a job through **one** wizard
- No pre-configuration of hardware, media sets or post-configuration of rotation policies required



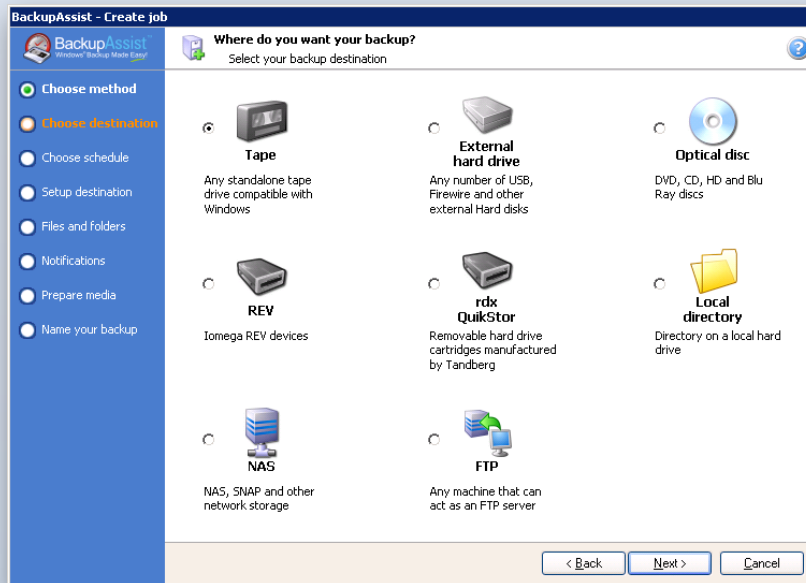
# Extensive built-in support for various hardware types

One major feature that makes BackupAssist truly unique is its support for different hardware types. Each hardware type has its own strengths and weaknesses, requirements and recommended usage strategies.

BackupAssist will maximize the usage of your hardware by providing device-specific functionality.

## Major Differences:

- BackupAssist provides specific functionality for different hardware types
- Backup Exec treats all devices as either a tape or hard disk drive



Our job configuration wizard allows you to select the specific type of hardware that you have. This automatically gives you options that are tailored to that specific type of hardware.

As new hardware devices are invented, we will include support for them, including customized options and best practices.

As a generic “catch-all”, you can choose to backup to a “Local Directory”.

In contrast, Backup Exec treats all devices as either a tape or a simple hard drive.

## Support for USB Disk Devices

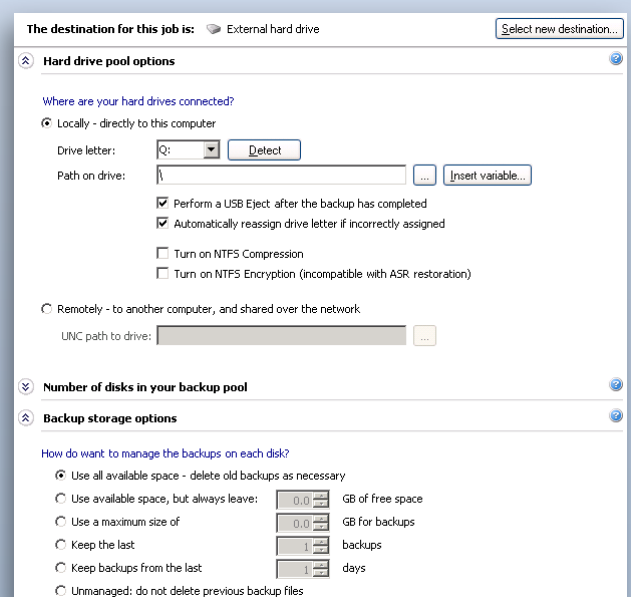
USB and Firewire connected Hard Drives are an increasingly popular choice for backups, but they can be prone to problems if they are treated like ordinary hard drives.

BackupAssist specifically addresses these problems to create a straightforward and reliable backup system.

Features include:

- **Safely removing hardware after the backup** – so no data is lost or corrupted when the drive is unplugged
- **Automatically assigning the correct drive letter** if the drive is plugged into a different USB port – so your backup will still work even though the drive is plugged into a different port
- **Scanning ports for the backup drive** even if it has been “safely removed” – so if your user forgets to swap the drive and it has been safely removed (soft ejected), BackupAssist will remap its drive letter and let the backup proceed.

In contrast, Backup Exec looks at USB devices as simply another hard drive. This can pose problems and compromise the reliability of the backups. For example, if the USB device has been safely removed but is still physically connected to the server, Backup Exec will not detect the device and as a result the backup will fail.





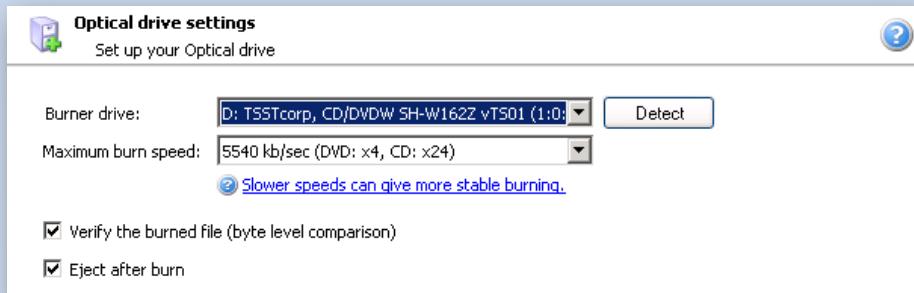
## Support for DVD and Blu-ray Burners

It's often necessary – especially for archiving purposes – to backup your most critical data to Write-Once media like DVDs. This method of backup is also popular for the smaller organizations that have a small amount of data.

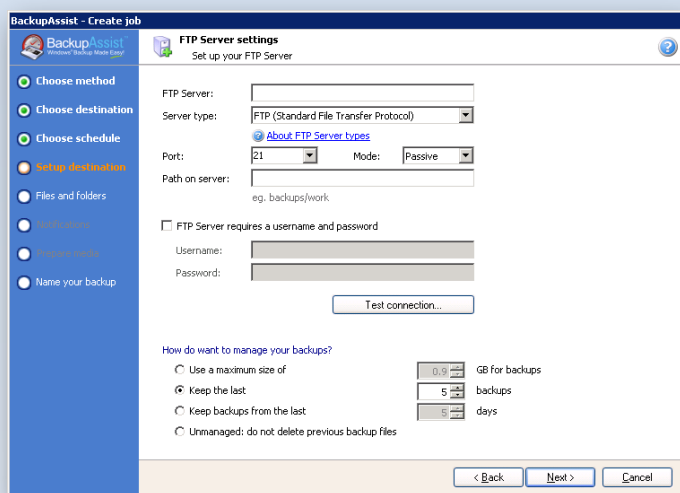
BackupAssist provides optical disc burning support “out of the box”.

### Major Differences:

- BackupAssist provides support for DVD and Blu-ray burners; BackupExec does not



## Support for FTP, FTPS and SFTP Servers



### Major Differences:

- BackupAssist provides support for FTP, FTPS and SFTP Servers; Backup Exec does not

An easy way to transfer your most critical data offsite is to FTP it to a server in a different geographical location.

BackupAssist makes this easy by incorporating FTP, FTPS and SFTP (the three file transfer protocols) into the software to make offsite replication easy.

## Removable Disk Cartridge Support - RDX, REV, GoVault

The latest variety of removable disk cartridges provide some unique benefits in terms of portability, robustness and backup history.

BackupAssist supports disk-cartridge type devices, and will detect and eject these devices. Tailored schemes are provided with optimized media usage for each device. For example, a 160GB cartridge may store 3 x 50GB backups, and if you have 5 cartridges (one for each day of the week), you will always have the last 15 backups.

Only BackupAssist is able to make the most of this technology by providing tailored support.

### Major Differences:

- BackupAssist provides support for RDX devices, Iomega Rev and Quantum GoVault drives; Backup Exec does not

## Support for NAS

NAS, an increasingly popular option for fully automated backups, is also supported natively by BackupAssist. As many NAS devices are Linux-based, they require explicit authentication – which BackupAssist caters for. Management of your backups on the NAS is also easy; you can even use the same NAS for the purposes of backing up multiple servers, and BackupAssist will manage the size of your backups in accordance with your desired strategy.

### Major Differences:

- BackupAssist provides support for NAS devices and uses backup strategies designed specifically for these devices

# Best Practice Rotation Schemes

A reliable backup strategy allows you to restore data from different points in history and gives you multiple, redundant backups.

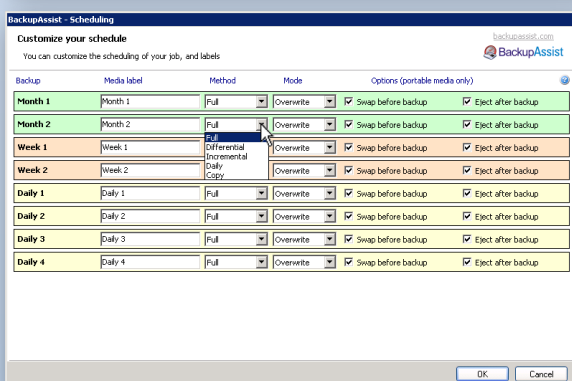
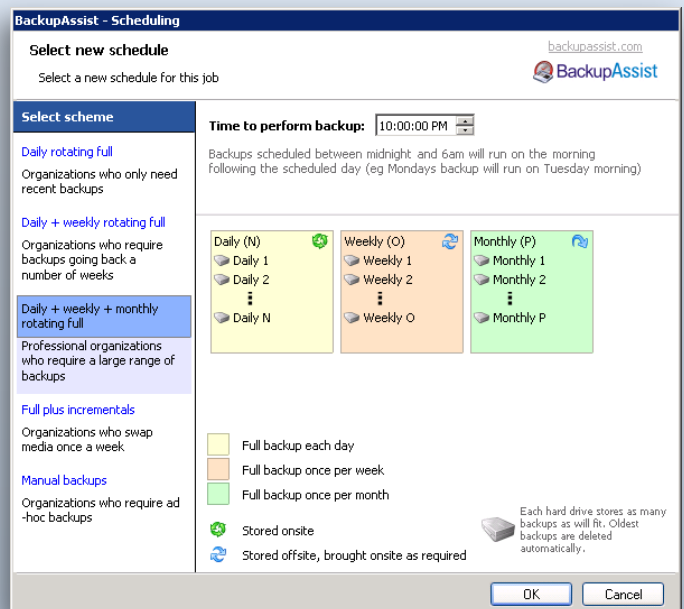
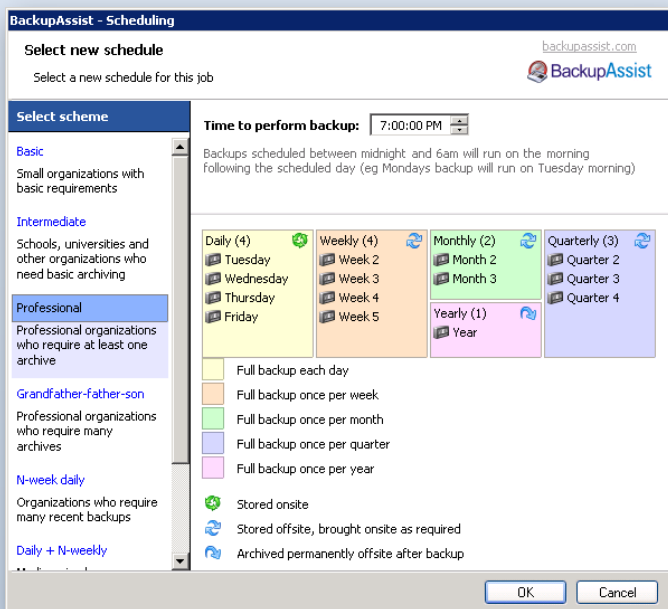
This is done through a backup rotation scheme, and for the new user, it can be complex to implement.

BackupAssist makes this easy. A rich array of best-practice media rotation schemes are built right into the software, giving you peace of mind in the fact that you have a backup history and redundancy that you can rely on.

Best of all, a visual representation of each scheme is also provided so that you can see at a glance how the backups will run and when you should be using media store on-site, off-site or even if you should keep a copy permanently off-site. That means that achieving a best-practice backup strategy is simply a matter of “point and select”, enabling you to enjoy the security and reliability of a good backup, without going through the learning curve.

Also unique to BackupAssist is the fact that each rotation scheme is tailored to suit the specific hardware device. This means that your backup hardware is used to its full capability, thereby maximizing your hardware investment.

For example, BackupAssist also has a range of backup rotation schemes tailored for USB Hard Drives, where Tape-based schemes do not fit. Schemes provided include rotating HDDs daily, the option to include separate weekly and monthly HDD backups, or the alternative option of performing a weekly full backup and daily incrementals.



Both BackupAssist and Backup Exec allow you to customize your scheduling to change the backup mode, backup method, archiving day and so on. However, the difference is that in BackupAssist you can do this for each job separately, instead of using a policy that affects multiple jobs.

## Major Differences:

- BackupAssist contains a rich array of best practice scheduling and rotation schemes to offer different levels of data protection
- Best practices are built into the software and are a matter of “point & select”
- Backup Exec leaves this configuration up to the administrator and only has the GFS scheme built-in
- BackupAssist assigns a backup scheme to a single job; Backup Exec implements a backup scheme by creating multiple jobs

## Features in Common:

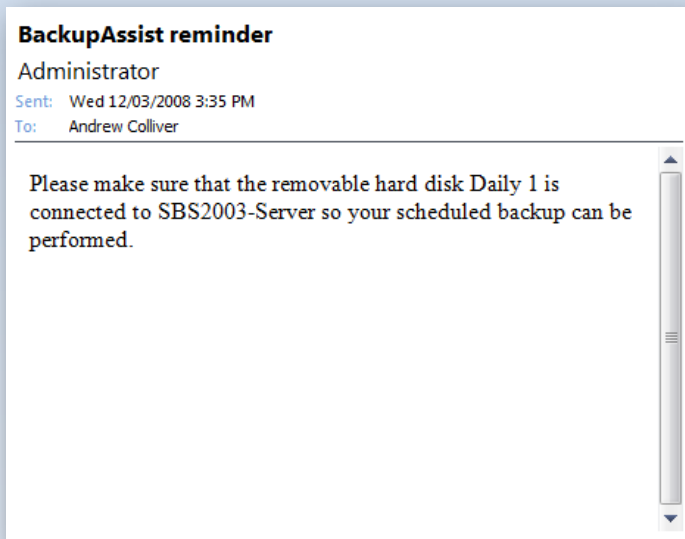
- Scheduling can be customized

## Notifications

When backing up to removable media such as tapes, HDDs, etc, human interaction is required to run the backups. The most critical aspect of a backup strategy is to make sure that the media rotation scheme is followed correctly.

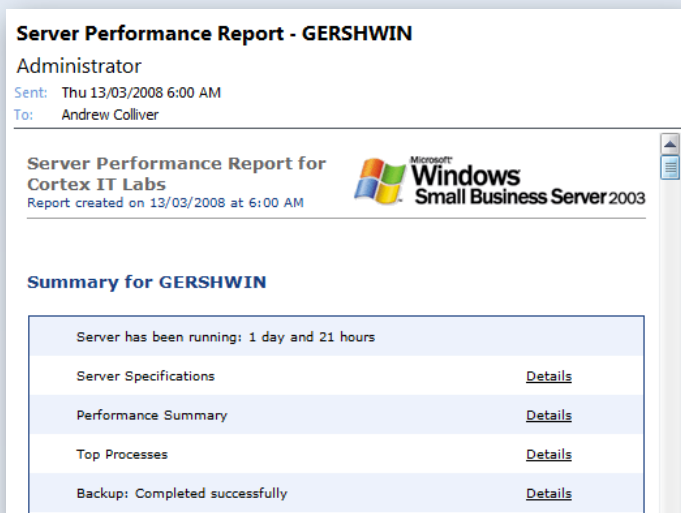
BackupAssist attempts to minimize the possibility of human error by reminding the backup operator which media to insert or connect to the server. This reminder can either be sent via email or network broadcast.

BackupAssist also provides maintenance notifications that can be emailed to remind someone to perform periodic maintenance tasks such as inserting a cleaning tape or performing a disk defragmentation.



However, only BackupAssist will integrate its results into the Windows SBS Performance Report (for Small Business Servers) to enable system administrators to view the backup results, instead of receiving the "Backup is not configured" message

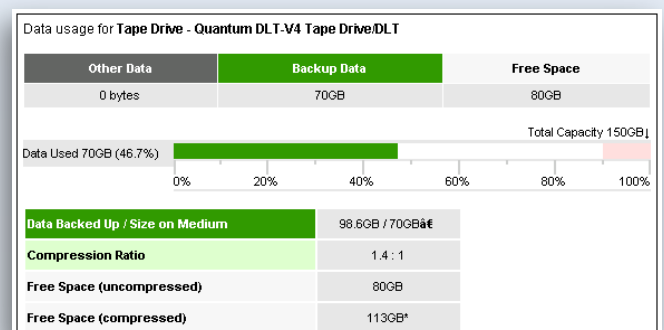
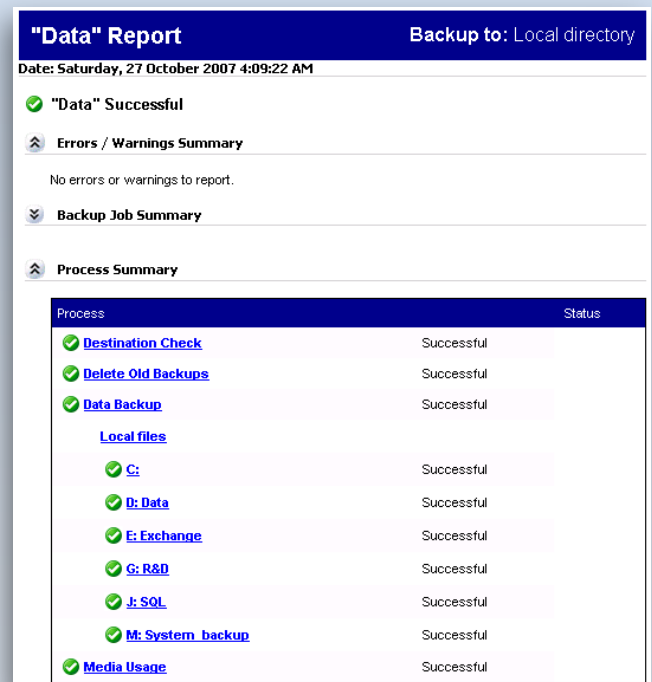
In addition, only BackupAssist has the Media Usage Report that allows you to clearly see how much of your backup media is used. This enables you to monitor and anticipate data growth issues before they actually happen.



The results of each backup – the all important Backup Report – can be emailed out or fed to a printer.

## Major Differences:

- BackupAssist provides integration with the SBS Performance Report
- BackupAssist sends customized reminder and maintenance notifications
- BackupAssist generates an intuitive media usage report to help identify data growth problems before they occur



## Features in Common:

- Both products allow you to email the backup report or print it out
- Reports can be viewed from the Administration Console

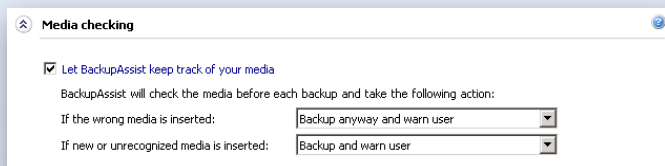
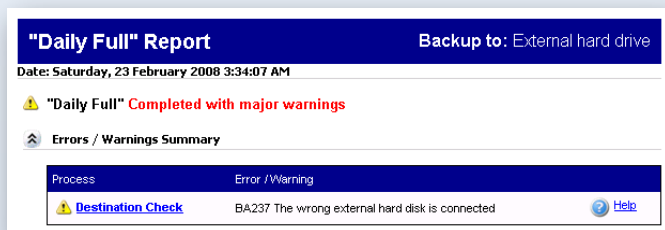


# Media Management and Licensing

## Media Tracking

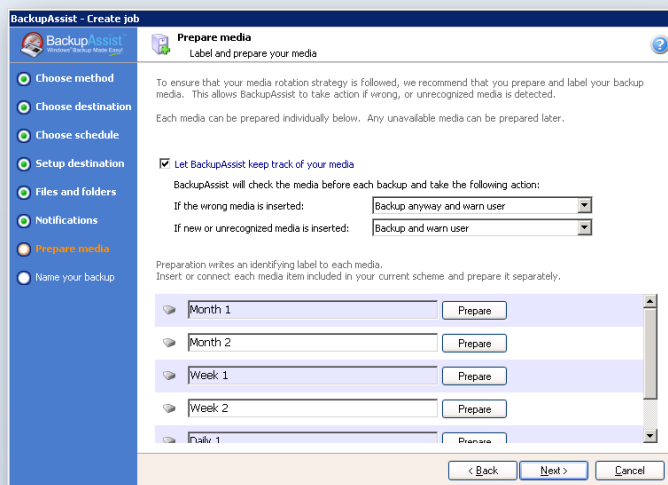
Another powerful feature of BackupAssist is that it provides media tracking – so system administrators can easily tell if the backup operator has been swapping media correctly in the backup report.

An option is provided to determine what to do if the wrong media is inserted – whether to backup anyway and warn the user, or to abort the backup.



### Major Differences:

- BackupAssist provides the option for media tracking to make sure that the backup operator is swapping media in accordance with the schedule



## Advanced Backup File Management

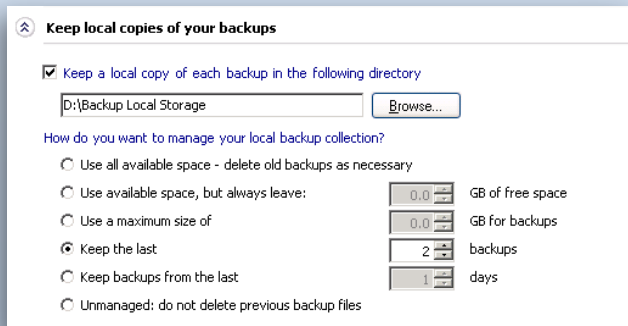
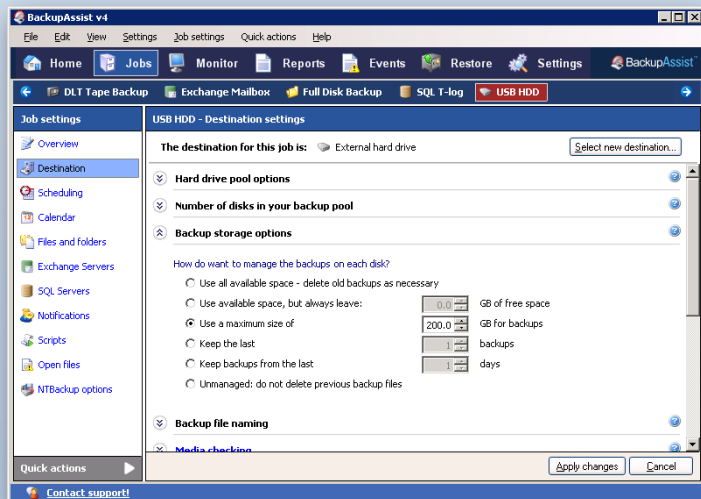
BackupAssist makes it easy to manage the backup files on your hard drive, removable disks, NAS or FTP Server.

So whatever your preferred backup retention scheme (keep old backups based on size, age, or number of backups), you can easily configure BackupAssist to meet your individual needs.

For additional speed and convenience when restoring your data you can choose the option for storing a separate copy of your backup file on a local or secondary location. This means that should an issue occur (like a user deleted a file or directory) you don't need to call your off-site storage facility to get last night's backup shipped over; instead you can use the local copy to recover the data.

### Major Differences:

- BackupAssist enables the user to manage their backup storage space using the intuitive backup file retention feature
- BackupAssist makes it easy to keep local copies of your backups for fast restoration



## Licensing Model

We understand that providing quotations for clients is made more difficult when products have complicated licensing models with dozens of options and add-ons.

That's why BackupAssist's licensing model is both simple and outstanding value.

For example, using the base license, you can backup:

- local system data (system state & Active Directory)
- any number of local and networked files and directories
- any number of local and networked Exchange Information Stores

Using one SQL Server Add-on, you can backup any number of local or networked SQL Servers.

Using one Exchange Mailbox Add-on, you can backup any number of mailboxes on local or networked Exchange Servers.

There is no need for remote agents or multiple license purchases.

*Consider the example where a SMB network contains 4 servers; one Domain Controller (also a File Server), one Exchange Server and two SQL Servers. What licenses would I need to backup all the servers (including Exchange Mailbox backups)?*

BackupAssist Solution	Backup Exec Solution
<ul style="list-style-type: none"><li>• 1 BackupAssist base license (\$249)</li><li>• 1 SQL Server Add-on (\$129)</li><li>• 1 Exchange Mailbox Add-on (\$129)</li></ul>	<ul style="list-style-type: none"><li>• 1 Backup Exec for Windows Servers licence (\$1162.66)</li><li>• 1 Backup Exec Agent for Active Directory licence (\$1162.66)</li><li>• 1 Backup Exec Agent for Microsoft Exchange Server (\$1162.80)</li><li>• 2 Backup Exec Agent for Microsoft SQL Server (2 x \$1162.66)</li></ul>
<b>Total cost: \$507</b> <b>Footprint: single install on the domain controller</b>	<b>Total cost: \$5823.44</b> <b>Footprint: requires installs on all 4 servers</b>

Note: Prices are correct at time of writing (5th March 2008), obtained from [www.BackupAssist.com](http://www.BackupAssist.com) and [www.symantec.com](http://www.symantec.com). Prices quoted are in US Dollars.

## Footprint

BackupAssist is specifically designed for SMB and as such has a vastly smaller footprint than Backup Exec.

BackupAssist's download size is just 2% the size of Backup Exec (9.9MB compared to 487MB) and its install size is around 1% the size of Backup Exec. (12.8MB vs 1113MB).

This highlights the fact that BackupAssist is designed to have a minimal impact on servers.

### Major Differences:

- BackupAssist is designed to have a simple licensing model and value pricing
- BackupAssist does not require remote agents on each Exchange or SQL Server

### Major Differences:

- BackupAssist's compact download and installed footprint is ideal for SMB Servers

# Functionality in Backup Exec but not BackupAssist

BackupAssist is designed for the SMB market, and the feature set has been carefully chosen to provide the best possible price-to-performance ratio for the SMB market.

Our aim has always been to keep our software easy to use and not overrun it with complex functionality that makes software expensive and is, in most cases, not required.

There are some practical limitations to BackupAssist that larger enterprises may encounter. For these limitations, we recommend equivalent alternatives that are suitable for SMBs and easy (and in many cases, more cost effective) to implement.

The major features that are not present in BackupAssist are:

- Support for media (eg. tape) spanning
  - We recommend that you split your backup job into two jobs, so that each job can fit on its own media.
- Support for tape libraries / autoloaders
  - For a fully automated backup solution, we recommend that you consider backing up to a NAS device or a large hot-swappable drive such as the Lacie Big Disk.
- Software compression option
  - Instead, we provide a hardware compression option where supported by the backup hardware.
- Disk to tape backup replication
  - BackupAssist supports disk to disk, disk to NAS, disk to optical, and disk to FTP replication, but not disk to tape (there has not been a demand for this among our users).
- Excluding days when not to backup
  - For example, specifying holiday periods when backups are not required (this feature is planned for a future release). Currently, users can manually suspend the job for the holiday periods, or simply get an error message that the backup was not successful.

Backup Exec also has a wide range of support for other applications through its remote agents and options. For example, Backup Exec provides solutions for Lotus Domino, Oracle, SAP, DB2, Netware, Linux, Mac, NDMP and Enterprise Vault.

In addition, Backup Exec has options such as the Laptop / Desktop option and the Library Expansion Option. For example, the Library Expansion Option scales the media storage system by leveraging additional drives within multidrive tape or optical autoloader/library storage systems. Such a solution is not only beyond the budgets of most SMBs (the hardware + software + labor costs would exceed \$10,000), but generally unnecessary and superfluous.

## *Major Differences:*

- BackupAssist is tailored for the SMB market
- Backup Exec has extra functionality for larger organizations

**The philosophy for BackupAssist is to keep it simple and provide a first-class product at a SMB price... a challenge that we believe has been met successfully.**

# Comparison Matrix

Features	BackupAssist v4	Backup Exec v12	
<b>Installation and Setup</b>			
7 minute install and setup	✓	✗	
Intuitive Setup Wizard for New Backup Jobs	✓	✗	
<b>User Interface</b>			
Backup Reports Viewer	✓	✓	
Backup Event Viewer	✓	✓	
Live Job Monitor	✓	✓	
<b>System Backup</b>			
Local Full System Backup	✓	✓	
Local System State/Active Directory Backup	✓ <sup>a</sup>	✓ <sup>b</sup>	a included in base license b Backup Exec Agent for Active Directory \$1162.66US per server
ASR Backup	✓	✗	
Restore Individual Active Directory Components	✗	✓ <sup>b</sup>	b Backup Exec Agent for Active Directory \$1162.66US per server
Open File Backup Support via Microsoft VSS	✓	✓	
Open File Support Support for Windows 2000	✓ <sup>a</sup>	✓ <sup>b</sup>	a BackupAssist Advanced Open Files add-on \$199US b Backup Exec Agent for Open Files \$1162.66US per server
File Exclusions	✓	✓	
Network Share Backup	✓	✓	
<b>File Backup Methods</b>			
Full	✓	✓	
Differential	✓	✓	
Incremental	✓	✓	
Daily	✓	✓	
Copy	✓	✓	
Last 'X' days	✗	✓	
<b>Application Backup</b>			
Exchange Information Store	✓ <sup>a</sup>	✓ <sup>b</sup>	a included in base license b Backup Exec Agent for MS Exchange \$1162.80US per server
Exchange Individual Mailbox	✓ <sup>a</sup>	✓ <sup>b</sup>	a BackupAssist Mailbox add-on \$129US b Backup Exec Agent for MS Exchange \$1162.80US per server

MS SQL	✓ <sup>a</sup>	✓ <sup>b</sup>	a BackupAssist SQL add-on \$129US (unlimited servers) b Backup Exec Agent for MS SQL \$1162.66US per server
SharePoint	✗ <sup>a</sup>	✓ <sup>b</sup>	a currently under development, expected price \$129US b Backup Exec Agent for MS SharePoint \$1162.66US per server
Lotus Domino	✗	✓ <sup>b</sup>	b Backup Exec Agent for Lotus Domino \$1162.66US per server
Oracle	✗	✓ <sup>b</sup>	b Backup Exec Agent for Oracle \$1162.66US per server
SAP Applications	✗	✓ <sup>b</sup>	b Backup Exec Agent for SAP Applications \$3733.36US per server
DB2	✗	✓ <sup>b</sup>	b Backup Exec Agent for DB2 \$1162.66US per server
Netware SMS	✗	✓ <sup>b</sup>	b Backup Exec Agent for NetWare Servers \$334.71US per server
Linux, Unix, Macintosh	✗	✓ <sup>b</sup>	b Backup Exec Agent for Linux/Unix or Macintosh \$334.71US per server (separate license for Linux & Macintosh agents)
NDMP	✗	✓ <sup>b</sup>	b Backup Exec Agent for NDMP Option \$1863.76US per server
Enterprise Vault	✗	✓ <sup>b</sup>	b Backup Exec Agent for Enterprise Vault \$1863.76US per server

### Backup Management

Replicate backup job to disk	✓	✓	
Replicate backup job to tape	✗	✓	
Replicate backup jobs to DVD or FTP	✓	✗	
Keep copy of the backup in a managed alternate location	✓	✗	
Store backups on any available device without pre-configuration	✓	✗ <sup>b</sup>	b Backup Exec requires pre-configuration of backup devices before they can be used
Inteligent Backup File Deletion before backup starts	✓	✗	

### Backup Media/Hardware Support

Hardware Specific Backup Settings	✓	✗	
Full Support for USB drives	✓	✗ <sup>b</sup>	b Backup Exec does not eject/inject USB devices or detect and reassign incorrectly mapped drives
Support for Tape Drives using OEM or Manufacturers Drivers	✓	☑ <sup>b</sup>	b Backup Exec encourages use of Symantec proprietary drivers and prompts user to uninstall OEM or manufacturer drivers
Full Support for USB Tape Devices	✓	✗ <sup>b</sup>	b Backup Exec does not supply drivers for USB tape devices and only recognises them as hot-swap devices, not tape drives
Tape Autoloaders & Libraries	✗	✓	
Hard Drive	✓	✓	
CD/DVD/Blu-ray (all formats)	✓	✗	
RDX, Iomega REV and Quantum GoVault	✓	☑ <sup>b</sup>	b Backup Exec treats this device as a normal HDD. Job settings are generic to tape and not specifically designed for the device
FTP, FTPS & SFTP	✓	✗	
NAS	✓	☑ <sup>b</sup>	b Backup Exec treats this device as a normal HDD. Job settings are generic to tape and not specifically designed for the device



Features	BackupAssist v4	Backup Exec v12	
Backup Format			
Software Compression	 <sup>a</sup>		a BackupAssist compression is performed using 7z after the backup is complete
Encryption (file backups only)	 <sup>a</sup>		a BackupAssist encryption is performed using 7z after the backup is complete
Supports Media Spanning			
File Spanning when backing up to file			
Restore on any Windows based machine without the need for 3rd party software (inc. BackupAssist)		 <sup>b</sup>	b Backup Exec uses its own proprietary file format and requires Backup Exec to be installed to restore any files
Scheduling			
Calendar Based Scheduling			
Industry Standard Rotation Schemes			
Fully Automated and Managed Media Rotation			
Customizable Rotation Schemes			
Multiple Scheduled Backup Jobs			
MS SQL Backup			
On-line Local MS SQL Backup			
On-line Remote MS SQL Backup		 <sup>b</sup>	b Backup Exec requires agent to be installed on each remote SQL Server (\$1162.66 per server)
Point-in-Time Backup and Restoration			
Continuous Protection for MS SQL Server			
MS Exchange Backup			
Live MS Exchange Backups			
Remote MS Exchange Backups			
Brick Level Backup and Restoration (individual mailbox)			
Transportable file format for Individual Mailbox backup	 <sup>a</sup>	 <sup>b</sup>	a Creates PST files. Open with MS Outlook on any PC b Must use Backup Exec to restore back to Exchange Server
Continuous Protection for MS Exchange Server		 <sup>b</sup>	b Backup Exec Agent for Microsoft Exchange Server \$1162.80 US per server
User Authentication			
Intergrates with Windows Authentication		 <sup>b</sup>	b Backup Exec uses proprietary user authentication accounts
User not required to be logged in to perform backup			

Backup Management			
Email Backup Reports	✓	✓	
Email and Network Broadcast Reminders	✓	✗	
Email and Network Broadcast Maintenance Notifications	✓	✗	
Send Backup Reports Directly to a Printer	✓	✓	
Printable Summary of Job Settings	✗	✓	
Integration with SBS Performance Reports	✓	✗	
Additional Features			
Run Scripts Before and After Backup Runs	✓ <sup>a</sup>	<input checked="" type="checkbox"/> <sup>b</sup>	a Full scripting inc. in-built variables b Single DOS command line only
Run Scripts Based on Success or Failure of Backup Job	✓	✗	
Adjustable Timeout Period	✓	✓	
Self-diagnosis Tools for Troubleshooting	✓	✓	
Automated Discovery of Unprotected Data on Network	✗	✓	
Dynamic Performance Load Balancing	✗	✓	
Licensing			
Backup MS Exchange Server with Base License	✓ <sup>a</sup>	✗ <sup>b</sup>	a Backup any number of Exchange Servers with a single license b Agent for MS Exchange Required \$1162.80 per server backed up
Additional License Required for MS Exchange Mailbox Backup	✓ <sup>a</sup>	<input checked="" type="checkbox"/> <sup>b</sup>	a Exchange Individual Mailbox add-on \$129US b Included in Agent for MS Exchange \$1162.80 per server
Backup Unlimited MS Exchange Servers with Single License	✓	✗ <sup>b</sup>	b Agent for MS Exchange Required for each Server, \$1162.80 per server being backed up
Additional License Required for MS SQL Backup	✓ <sup>a</sup>	<input checked="" type="checkbox"/> <sup>b</sup>	a MS SQL add-on for BackupAssist \$129US b Agent for MS SQL Required \$1162.66US per server
Backup Unlimited MS SQL Servers with Single License	✓	✗ <sup>b</sup>	b Agent for MS SQL Required for each Server, \$1162.66 per server being backed up
Additional License Required for System State/Active Directory	✗	✓ <sup>b</sup>	b Agent for Active Directory Required \$1162.66US per server
Additional License Required for Open Files Backup (non VSS)	✓ <sup>a</sup>	✗ <sup>b</sup>	a Advanced Open Files add-on Required \$199US b Included in base license
Installation Footprint			
Download File Size	9.9MB	487MB <sup>b</sup>	b 487MB for 32 bit version, 525MB for x64 version, with extra agents and options as separate downloads of over 2GB
Installed Footprint	12.82MB <sup>a</sup>	1,113MB <sup>b</sup>	a BackupAssist v4.0.15 b Backup Exec v12 Rev 1364
Can Co-exist with Other Backup Software	✓	✗ <sup>b</sup>	b Backup Exec will uninstall Windows drivers for Tape Drives and prevent other Software accessing the tape drives
Additional Components Required to Install	None	SQL Server <sup>b</sup> Database	b Backup Exec will install MS SQL Express Database if no MS SQL Server found